

ROTARY PLACER MATRIX

Machine Type
Product Sizes and Speeds






Flexible

Versatile

Dependable

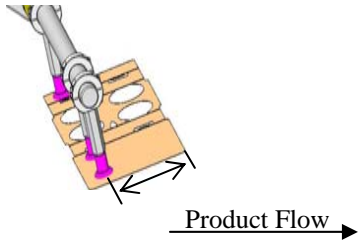


GRAPHIC PACKAGING
INTERNATIONAL, INC.
MINNESOTA AUTOMATION PRODUCTS

Machine Style	Rotary Size	Rotary Side Plate Width	Rotary Frame Depth	Speed PPM	Max Tail Length		Prod Max Height	
					120°	240°	120°	240°
 <p>Standard Rotary Placer</p>	3.75" Mini	20" – 66"	15" – 24"	450	2.88"	1.88"	4.00"	3.00"
	5" Mini	20" – 66"	15" – 24"	450	4.00"	2.5"	5.00"	3.50"
	7.5" Standard	20" – 66"	15" – 24"	400	6.00"	3.75"	8.00"	5.75"
	10" Standard	20" – 66"	15" – 24"	150	8.00"	5.00"	10.00"	7.00"
	12" Jumbo	20" – 66"	15" – 24"	100	9.50"	6.00"	11.50"	8.00"
	14" Jumbo	20" – 66"	15" – 24"	100	11.25"	7.00"	13.25"	9.00"
	16" Jumbo	20" – 66"	15" – 24"	100	13.23"	8.00"	15.25"	10.00"
 <p>Servo Rotary Placer</p>	5" Mini	NA	NA	400	4.00"	2.50"	8.00"	5.00"
	7.5" Standard	NA	NA	400	6.00"	3.75"	12.00"	7.50"
 <p>3-Stop Secondary Motion Rotary</p>	Note: When picking from outside of cavity, the maximum height decreases as the depth increases				Picking from outside of cavity		Picking from inside of Cavity	
	NA	24" Single Lane	46-1/2"	200	4" Max Depth	15-1/2" Max Height	4" Max Depth	15-1/2" Max Height
	NA	28-1/4" Single Lane	46-1/2"	200	4" Max Depth	15-1/2" Max Height	4" Max Depth	15-1/2" Max Height

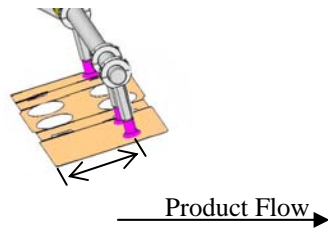
120° Placement Tail Length

The distance from the center of the vacuum cup to the edge of the product at placement

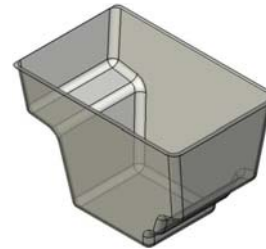


240° Placement Tail Length

The distance from the center of the vacuum cup to the edge of the product at placement

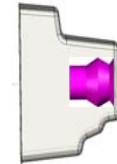
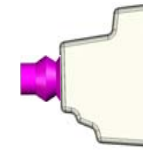


Product Cavity Illustrations



Picking from outside of cavity

Picking from inside of cavity



- Maximum speeds attainable are dependent on product characteristics.
- Obtain higher placements per minute using multiple product lanes in the magazine.
- Customized configurations are available to meet the needs of the end user.
- Advancing Cam Motion available on standard rotaries to allow for enhanced product placement at line speed.
- Minimum product height by width equals 1" x 1"
- Tail Length refers to the part of the product that travels into the rotary frame as it moves from the magazine to placement.



GRAPHIC PACKAGING

INTERNATIONAL, INC.
MINNESOTA AUTOMATION PRODUCTS

975 3rd Street SW • PO Box 190 • Crosby, MN 56441
1.888.800.6861 • 218.546.2222 • Fax 218.546.2252

www.minnesotaautomation.com • E-mail: ma@graphicpkg.com